

WELCOME TO THE USS KIDD VETERANS MEMORIAL

The USS KIDD (DD-661) is the centerpiece exhibit of the Veterans Memorial, located in the heart of downtown Baton Rouge, Louisiana. Located on the Mississippi River, the memorial is open daily from 9:00 am to 5:00 pm. The facility is closed only on Thanksgiving and Christmas.

The KIDD herself is an excellent example of the famed *Fletcher*-class destroyers of World War II. She is the only existing destroyer restored to her World War II configuration and is ranked as one of the most accurate restorations in a fleet of historic vessels that spans five continents, as well as being designated a National Historic Landmark. Visitors touring her decks see over 50 inner spaces, including the Officer's wardroom, galley, sickbay, radio central, berthing (sleeping) areas, and the ammunition handling rooms. On the main deck, a brass plaque lists the names of the 38 men killed aboard ship when a *kamikaze* crashed into the KIDD on April 11, 1945. In the aft crew quarters, visitors will find a unique museum dedicated to the 175 *Fletchers* that sailed during World War II, the Korean War, and the Cold War. The sailor's lockers have been encased in glass to display memorabilia.

The Veterans Memorial provides exhibits and visitor services including a Gift Shop containing a large selection of Louisiana and military souvenirs. The museum's exhibits reflect many years of American military history. Dozens of one-of-a-kind artifacts mark our collection. Some of the highlights include over 40 ship models, a display on the WAVES, the Louisiana Veterans Hall of Honor, an indoor replica of the Vietnam Veterans Memorial, the pilothouse from the riverboat LOUISIANA, and a replica of the gundeck of the 17th century frigate USS CONSTITUTION (aka "Old Ironsides"). A section of the museum honoring the American Volunteer Group's "Flying Tigers" of World War II fame includes a replica of a P-40E *Warhawk* fight plane that starred in Steven Spielberg's *1941* and an eight-foot bronze statue of General Claire Chennault. A restored A-7E *Corsair II* jet attack aircraft that flew during the Vietnam War sits atop a 14-foot pedestal at the northern end of the complex and is dedicated to Louisiana's Vietnam Veterans.

A life-sized statue of General John Archer Lejeune of Marine Corps fame guards the entrance to the Louisiana Memorial Plaza. The plaza is enclosed by polished granite walls inscribed with the names of over 7,000 Louisiana natives who gave their lives in defense of their country. An eternal flame burns in the center of the courtyard in memory of these fallen heroes.



The USS KIDD Overnight Camping Program

Camping overnight aboard the USS KIDD is a fun and educational way to spend time with your family. You'll experience the close-quarters living firsthand and learn about the courage under fire displayed by our American armed forces as they faced German U-boats and Japanese *kamikaze* aircraft. Inside of this packet, you will find important information not only on how to set up an overnight stay, but also on how to make this a fun and safe experience for all concerned. Here are some tips to get you started:

- Minimum number to schedule: 20 people (adults & children)
- Minimum age: 6 years old
- Co-ed groups are welcome.
- The price is \$21.00 per person (adults & children) and includes breakfast.
- Deposit: \$150.00 (Standard) / \$300.00 (Exclusive)
- There must be a **minimum** adult-to-child ratio of 1-8.

Last Revised: August 12, 2009



Prices and Reservations Information



- **Admission** for the Overnight Camping program is \$21.00 per person (adults & children).
- There is a **minimum number** of 20 people required to make a reservation.
- All participants must meet the **minimum age requirement of six (6) years of age**; this means they must be age six *to even board the ship*; not just spend the night. There is no exception to this rule.
- An adult should accompany all children. The USS KIDD requires a **minimum ratio** of one (1) adult per every eight (8) children for an overnight stay.

There will be other groups aboard ship on the night of your stay. With an **Exclusive Reservation**, you guarantee a minimum number of 75 people for your stay (rather than the 20 for the Standard reservation). The price is still \$21.00 per person, but with the Exclusive status, your group has the entire ship to itself that night with no other groups aboard.

- A **deposit** of \$150.00 is due ten (10) working days from the date that you make your reservation (\$300.00 for Exclusive reservations). **This deposit is non-refundable.** If the deposit is not received within ten (10) working days from the date that your reservation was made over the phone, your reservation will be cancelled and the date is reopened for bookings.

- **Payment of the remaining balance** is due thirty (30) days prior to the night of your stay. Acceptable forms of payment include cash, check, money order, or credit card. If the balance is not received before the 30-day deadline, your reservation will be cancelled and the date made available again for bookings.



Please exercise great care in establishing the count of your group when sending in your remaining balance. **There are no refunds for groups that arrive with fewer people than were initially booked. Once the 30-day deadline is passed, you are committed to that number and that date.** Also, please note that we cannot guarantee available bunk space for last-minute additions.

Individuals taking the **tour only** must still pay the full price (\$21.00) and be included in your final count even if they depart afterward and do not spend the night.

- **Cancellations:** All deposits are non-refundable, though they may be transferred to a new date if the USS KIDD is given notice thirty (30) days prior to the night of your stay and if the new date in question is available for booking. Payment of the remaining balance will be adjusted to a new 30-day deadline accordingly. **Once the 30-day deadline is reached, your date is no longer movable.**

Exceptions to the 30-day notice include 1) ice on the decks or 2) the immanent arrival of a hurricane. In these circumstances, your group coordinator will be contacted by the USS KIDD reservations staff. Rainfall is not grounds for cancellation of your Overnight.

- **Bookings:** Overnights are conducted seven (7) days a week. The most popular nights are Fridays and Saturdays. Group coordinators should call ahead several months in advance. Our busiest season occurs between January and May. Overnight bookings cannot be made on the following dates: July 3, July 4, Thanksgiving Eve, Thanksgiving Day, Christmas Eve, and Christmas Day. **Groups scheduling within thirty (30) days or less of their planned stay must make full payment when the booking is made.**

Reservations may be made by calling (225) 342-1942, Monday through Friday, from 9:00 a.m. to 5:00 p.m. **Please note that inquiries for information and available dates do not constitute making a booking.**

Mail your deposits to:

USS KIDD Veterans Memorial • ATTN: Overnight Camping • 305 South River Rd. • Baton Rouge, LA 70802-6220

Make your deposit payable to: USS KIDD Veterans Memorial

Last Revised: August 12, 2009

Bunking Arrangements

There are five (5) berthing compartments aboard the USS KIDD with varied numbers of bunks in each space. Your space will be assigned to you upon your arrival and will depend upon the size of your group.



We do not assign different groups to the same sleeping compartment.

Groups do not have to be all-male or all-female. However, some organizations require separate berthing for males and females. Any requests for separate accommodations must be made in advance when making your reservation. Otherwise, your request cannot be guaranteed.

The sleeping compartments are air conditioned and heated for the comfort of our guests.

Keep all valuables (cameras, purses, wallets, etc.) with you at all times to deter theft.

Shower facilities are available, but you must provide your own soap, towels, and washcloths. It is best to shower prior to bedtime, as time is limited for such activities during the morning.

The 5 Rules to Packing Right



- Pack light . . . VERY LIGHT!!!
- Don't put any foods, drinks, candy, chewing gum, nor anything edible (except medicine) in your personal gear.
- Remember that the more you bring, the more you will have to carry.
- Remember that ladders aboard a World War II destroyer are 70 degrees in angle and you will have to move your gear up and down several ladders during your stay.
- Remember that there are no closets aboard ship to stow your gear in. Bring only what can be stored beneath or beside your bunk without creating an obstruction for others to walk safely.



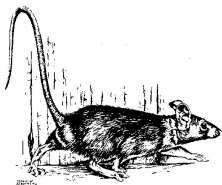
Food & Beverages



- All groups should eat a full meal (dinner) **prior to arriving** at the USS KIDD for their Overnight stay.

Snacks and juices or soft drinks are allowed aboard ship under the following conditions:

1. No food or drinks are allowed belowdecks in the sleeping spaces.
2. Keep all food and drink items in one or two large ice chests for the group; **not** in individual luggage.
3. All food and drinks will be consumed in a **designated area** aboard ship.
4. No glass containers



Why so tough on the rules for food? Simple: there are some guests that we DON'T want aboard ship.

NO ALCOHOLIC BEVERAGES of any kind are allowed aboard ship. There are no exceptions to this rule and violations will result in immediate dismissal from the premises.

Suggested Supplies

- Flashlight
- Camera
- **Sleeping Bag**
- **Pillow**
- Personal toiletries
- Washcloth, towel & soap
- Tennis shoes
- Change of clothing
- Extra blanket (cold weather)

Phoning in Emergencies

If you need to be reached in the event of an emergency while staying aboard the USS KIDD, our telephone number is (225) 342-1942. Once the automated system picks up, callers should dial 0 for the Operator in order to reach personnel aboard ship.

Medical & Health Information



Our guides are always on duty while you are staying with us. First Aid supplies are available from your guides for minor mishaps. Adherence to the safety rules outlined in this information packet will reduce the likelihood of accidents and personal injury.

Many scouting groups are required by their parent organizations to have medical release forms signed by a parent or guardian for each of their youth attending a function or activity. However, for those groups that do not have such a system already in place, we have placed the Medical Release Form seen below in this packet for use by coordinators.



Things to Watch Out For:

Example # 1: Mr. Jones invites his son's friend Mike along on a scout outing. Mike is not a member of the Cub Scouts and so Mr. Jones doesn't think Mike needs to fill out any permission slips or medical waivers. Mike gets hurt during the trip and needs to go to the Emergency Room for treatment. Neither Mr. Jones nor the scout master has a medical release form for Mike and now they have to track his parents down to get him treated.

Example # 2: Mr. Smith is planning an outing for his youth group. He has collected medical release forms for all of the kids attending without their parents. For those attending WITH their parents, he has not bothered. On the day of the trip, Susie's father gets called in to work at the last moment and cannot go. During the trip, Susie gets hurt and needs medical attention. Mr. Smith has no medical release form because he thought Susie's dad would be there.

Example # 3: Mrs. Anderson takes her class on a field trip. She has collected medical release forms for all of the students, however, she forgets the forms at home. One of the students gets hurt on the trip and needs medical attention. Mrs. Anderson must now track down a parent or guardian to get the student treated.

➤ The above stories are all true (the names have been changed). The USS KIDD requires group coordinators to have some type of permission slip or medical release form on-site for each under-age participant during their Overnight stay.

MEDICAL RELEASE FORM / PERMISSION SLIP	
My son/daughter _____ <small>(Name of Child)</small>	has my permission to participate in the
Overnight Camping program aboard the USS KIDD in Baton Rouge, Louisiana. In the event of a medical	
Emergency, _____ <small>(Name of Group Coordinator)</small>	has my permission to seek medical care for my
son/daughter.	
(_____) _____ - _____ <small>(Emergency Contact Number)</small>	_____ <small>(Signature of Parent or Guardian)</small>
_____ <small>(Name of Insurance Provider)</small>	_____/_____/_____ <small>(Date Signed)</small>

Overnight Camping Safety Rules

We are delighted that you have chosen the USS KIDD for your camping adventure. Those boarding the KIDD, however, need to understand that she was built in 1942 before modern safety practices were in effect. Trained personnel used her for combat—not pleasure. Ladders are steep, decks can be slippery, and equipment is literally underfoot. In short, everyone needs to be attentive to inherent dangers while aboard and observe all of the rules. They have been developed over the course of conducting 20 years' worth of Overnights and they are in place for your safety.

GROUP COORDINATORS

Please distribute these rules to your Parents.



PARENTS

Please go over these rules with your children.

1. **Running** is not permitted in the museum nor aboard ship. This is entirely for the campers' safety. Falling down on a metal deck results in broken bones and stitches.
2. **Removal of items** from the ship or any form of **vandalism** is strictly prohibited and will be prosecuted to the fullest extent of the law.
3. **Parents are responsible** for the actions of their children whether supervised or not.
4. **Restricted areas** are marked and those restrictions should be observed. Do not enter any area this is chained or roped off. *If in doubt, ask your Overnight Guide.*
5. When exploring the ship, we strongly recommend **the Buddy System**. At least one adult should be with a group of children at all times. No children should be unattended while on board.
6. **Do not push buttons**, turn knobs, or throw any switches that you see throughout the ship. A destroyer has many cross-connections in its electrical system to allow back-ups to operate equipment in case of damage or power failure. A switch thrown innocently in curiosity may result in important systems being accidentally shut down (like AIR CONDITIONING or HEATING) during your stay.
If you are curious about an item and what it does, check with your Overnight Guide.
7. Vertical **ladders** (straight up and down) are off-limits and are marked. Angled ladders (like stairs) are okay to climb. When going down ladders (stairs), use both hands on the rails. Double-check your shoe laces before going down so that you will not trip, watch your head, and only one person on the ladder at a time.
8. When handling **the 20mm guns** aboard ship, pay attention to where you are swinging the mount. Be aware of people in your vicinity—it hurts and can injure when a gun barrel hits you in the head. **Do not unlatch anything** on the gun or stick your hands in the gun's mechanism. **No child should be on a gun without an adult supervising him/her.**
9. When handling **the 40mm guns**, do not jump off the guns. You will hit your head on the guard rails. Sit down and slide off of the gun mount. **Do not cross over the curved half-piping where the gun tracks.** You will be seriously hurt. **No child should be on a gun without an adult supervising him/her.**

OVERNIGHT CAMPING SAFETY RULES: (Cont'd)

10. No one is permitted to climb into either **whaleboat**.
11. **Climbing** on the superstructures of the ship (supporting walls, crossbeams, pipes, stanchions, watertight doors, vertical ladders, etc.) is prohibited.
12. **Watch your step & duck your head!** There are raised hatches located on the deck (floor) that you can trip on and some of the decks are uneven. Also, when going through doorways, you should step up and over the bottom lip of the door. Never stand on this: you'll hit your head. Duck your head when stepping through a doorway or climbing up or down a ladder.
13. **Do not lean on railings or netting** along the side of the ship or on the upper decks.
14. In the event of rain, **beware of slippery or wet decks**. Keep one hand free for support on railings and whatnot.
15. **"Lights Out"** is set at 12:00 midnight to insure everyone receives a good night's sleep before **"Reveille"** at 6:30 a.m. This also avoids problems of noise keeping neighboring groups awake. After "Lights Out," no one should be out on the Main Deck except to visit the bathroom; children/youth should be accompanied by an adult. *Our alarm system is active at this time for your protection and wandering the ship at night will set it off.*
16. Personal **electronic equipment** should be left at home as the ship's electrical systems were not designed for modern electronic devices (i.e. radios, CD or MP3 players, *hair dryers, curling irons,* etc.)
17. **Smoking** is permitted on the open (uncovered) areas of the Main Deck only.
18. **No alcoholic beverages** are allowed on the premises (**grounds for immediate dismissal**).

CRIME & PUNISHMENT

You've seen the rules. Here are the penalties for breaking them. Drum roll, please!

<p style="text-align: center;">DEFCON 1 — Warning issued. DEFCON 2 — 10 minute time-out. DEFCON 3 — Child put to bed with parent or guardian supervising.</p>
--

These rules apply to adults as well. Repeated **failure to comply** with these safety rules will result in DEFCON 4 — Removal from the premises.

Parking

You should report to the front door of the museum with all of your gear and supplies; not to the levee and the ship. We recommend unloading large and/or heavy objects (i.e. ice chests) at the front door before parking. Parking is available curbside on the street in front of the museum, as well as at the Baton Rouge River Center parking garage (fee charged) and the Belle of Baton Rouge Casino parking garage (free & 24-hr. security). We recommend that visitors not leave valuables unattended in vehicles as this invites break-in and theft.



The USS KIDD assumes no liability for losses of or damage to vehicles parked in front of the museum.

Restaurants En Route to the USS KIDD

Using the map included in this packet, you should be able to locate any of the restaurants listed below. You will want to call ahead for large groups. This list is provided for informational purposes only.

Siegen Lane Exit (I-10 from New Orleans)		Sherwood Forest Dr. Exit (I-12 from Hammond)	
Chili's Grill & Bar	(225) 292-0702	Podnuh's BBQ	(225) 295-7056
Raising Canes	(225) 291-4865	Pizza Hut	(225) 292-1609
Burger King	(225) 293-1155	McDonalds	(225) 292-7776
McDonalds	(225) 293-9250	Burger King	(225) 272-1270
Taco Bell	(225) 291-0377	Taco Bell	(225) 292-5513
WhataBurger	(225) 291-1279	Jack-in-the-Box	(225) 273-1003
Shoney's Restaurant	(225) 291-3228	Subway Sandwiches & Salads	(225) 292-0850
IHOP	(225) 291-5311	Sonic Drive-In	(225) 273-6220
Arbys	(225) 296-5111	Piccadilly Cafeteria	(225) 293-4853
Lobdell Hwy. in Port Allen (I-10 from Lafayette)		Government Street (approaching the KIDD)	
Shoney's Restaurant	(225) 344-6544	Frostop	(225) 344-1179
Burger King	(225) 346-0422	McDonalds	(225) 383-6478
McDonalds	(225) 387-9784	Shuck's On The Levee (France St.)	(225) 378-6363
Waffle House	(225) 344-6199	Capital City Grill (Lafayette St.)	(225) 381-8140

Program Hours & Activities

The Overnight Camping program begins at 7:00 p.m. on the night of your stay and ends at 9:00 a.m. on the following morning.

The museum closes every day at 5:00 p.m. **On the night of your stay, plan to arrive between 6:30 and 7:00 p.m.** Your tour guide(s) will meet you at the museum during this time. Once all groups have arrived in full, you will be shown a short orientation film and your guide(s) will go over the Safety Rules with you.

Once aboard ship, you will be shown to your assigned berthing space and have a few minutes to settle in. A fire drill will be conducted so you will know what to do and where to go in case of emergencies.

From there, your guide(s) will conduct you on an extensive tour of the ship where you will learn all about life aboard ship in World War II and the role that destroyers played in battle. You'll learn about RADM Isaac Kidd and why the KIDD's crew became known as "the Pirates of the Pacific."

After the tour is over, there is time for snacks. Groups may then choose to explore the ship on their own in more detail if they like, taking a turn on the 20mm and 40mm guns.

Three other activities to choose from include a tour of the USS KIDD's engineroom, a "Test Your Knowledge" type scavenger hunt, and a demonstration of ham radio by the USS KIDD Amateur Radio Club (ARC). All of these are optional, of course. Ham radio demonstrations should be requested when booking your stay and can be guaranteed only if volunteers from the ARC are available on that night.

Lights Out is at 12:00 midnight. Reveille follows the next morning at 6:30 a.m. Groups should be ready to depart the ship at 7:00 a.m. with their gear to return to the museum where breakfast is delivered at 7:30 a.m. Following breakfast, your group is free to tour the exhibits in the museum at your leisure, as well as visit our Gift Shop to look for souvenirs.

Groups sometimes enjoy participating in the raising of the flags aboard ship and on shore at the museum in the mornings at 9:00 a.m. If this is of interest to you, please advise your booking agent.

The ship and museum reopen to the general public at 9:00 a.m. and it is here that all Overnight activities officially end. However, your group is welcome to return to the ship, explore in the daylight, and take photos. Just remember: the safety rules are still in effect, even in the daytime. **You may stay as long as you like for the remainder of the day until the museum closes again at 5:00 p.m.**



BIRTHDAY PARTIES

While an Overnight aboard the KIDD can be a fun birthday activity, the ship is not really an ideal location for a party. We recommend having cake, ice cream, and presents in our Snack Bar (seats approx. 30 people) in the museum. Keep in mind, though, that the longer your birthday party activities are, the less time you have to tour and explore the ship that night. Cleaning up in the Snack Bar after the party is also a consideration.

Tentative Overnight Camping Itinerary

The average nightly itinerary is listed below. **All times are approximate.** Factors such as timely arrival, ham radio demonstrations, etc. will affect these times.

5:00 p.m.	Ship & museum close for touring.
6:30 - 7:00 p.m.	Overnight groups arrive at museum. <i>(Remember: showing up on time translates to more time aboard ship.)</i>
7:00 p.m.	Orientation film & Safety briefing.
7:45 ~ 8:15 p.m.	Move gear to the KIDD, stow food items on Main Deck, get settled into bunks, conduct fire drill.
8:15 ~ 9:30 p.m.	Guided tour of the USS KIDD. <i>(May include optional Ham Radio demo if requested and if volunteers are available)</i>
9:30 p.m. ~ 12:00 a.m.	Free period -- Groups may eat snacks at this time and explore the ship on their own. At all times, however, we require the use of the Buddy System. All children must be accompanied by adults. Optional activities (Scavenger Hunt & Engineroom Tour) conducted at this time. If you have an activity that you would like to conduct (i.e. religious devotional or service, or activities for earning merit badges, etc.), these can be done at this time, so long as they have been cleared through the Reservations Department ahead of time for compliance with safety regulations.
12:00 midnight	Lights Out. <i>(This time may be moved up if requested)</i>
12:00 a.m. ~ 6:30 a.m.	Sleep period. No hands should be above deck except for bathroom purposes (adults or children).
6:30 a.m.	Reveille.
6:30 a.m. ~ 7:00 a.m.	All hands pack their gear and get ready to depart the ship.
7:00 a.m.	All hands depart ship with their gear and return to museum on shore. Gift Shop opens at this time for purchase of souvenirs. USS KIDD closed until 9:00 a.m. for cleaning and washdown of decks.
7:15 ~ 7:30 a.m.	McDonalds delivers breakfast to museum.
7:30 a.m. ~ 8:00 a.m.	Breakfast outside in P-40 Courtyard <i>(weather dependent)</i> .
8:00 a.m. ~ 9:00 a.m.	Touring museum. Gift Shop open for purchase of souvenirs. USS KIDD closed until 9:00 a.m. for cleaning and washdown of decks.
9:00 a.m.	Memorial reopens to the public. USS KIDD reopens for touring. Optional activity (Flag Raising) conducted at this time.
9:00 a.m. ~ 5:00 p.m.	All Overnight activities are concluded. Overnight admission covers any additional self-guided touring through the close of business at 5:00 p.m.

IN THE EVENT OF RAIN . . .

Not every event can be planned for. Sometimes, the weather just won't cooperate. In the event of unexpected rain, when touring is uncomfortable and the decks are slippery and not 100% safe, you may wish to stay out of the weather and instead make use of our 100-seat movie theater inside the museum. **If it rains for an extended period after your arrival, reverse things and tour the ship in the AM and tour the museum and watch a video in the PM.** Feel free to stop off at the video store and bring the film of your choice (VHS or DVD). It could salvage a weather-ruined outing and turn it into a fun evening at the movies.



How To Find Us

From Lafayette & Port Allen:

Take I-10 East across the Mississippi River bridge. Take I-110 North to Convention Street exit (left side of highway). Turn left onto Convention and go straight to the river. Turn left onto River Road. The USS KIDD is located two (2) blocks south on the right.

From New Orleans:

Take I-10 West to I-110 North. Take the Government Street exit (right side of highway). Turn left at the bottom of the ramp and follow Government straight to the Mississippi River.

From Slidell & Hammond:

Take I-12 West to I-10 West. Follow I-10 West to I-110 North. Take the Government Street exit (right side of highway). Turn left at the bottom of the ramp and follow Government straight to the Mississippi River.

From St. Francisville & Natchez:

Follow Highway 61 South to I-110. Take I-110 South to the Government Street exit (left side of highway). Turn right at the bottom of the ramp and follow Government straight to the Mississippi River.

USS KIDD (DD-661) OVERNIGHT CAMPING RESERVATION FORM

Date of Arrival: ____ / ____ / ____ Day of Arrival: _____

Group Name: _____

Contact Person: _____

Address: _____

City: _____ State: _____ Zip Code: _____

Work Phone: (____) _____ - _____ Home Phone: (____) _____ - _____

Cell Phone: (____) _____ - _____ Email: _____

Total Number of Campers Expected at \$21.00 per Person <i>(prices subject to change)</i>	
--	--

Separate Accommodations for Male & Female Campers? Yes No
 If yes, number of male campers? _____ Number of female campers? _____

➤ **REMEMBER:** Exercise caution with your numbers. There are no refunds for overbooking.

Please check one of the following options:

STANDARD RESERVATION (minimum 20 people guaranteed)

Enclosed is a check in the amount of \$150.00 (Chk. # _____) for a Standard Reservation. This deposit reserves my group's Overnight stay aboard the USS KIDD. I understand that:

1. This deposit is due within ten (10) working days after making my reservation over the phone or the date I have reserved will be made available again for booking to other groups,
2. The balance is due thirty (30) days prior to the date of our arrival or the date is lost,
3. **There are no refunds. We pay for the number of people that we book on the 30-day deadline.**
4. Children must be a minimum of six (6) years of age to attend (*no exceptions*),
5. There must be a minimum 1-8 adult-to-child ratio within my group,
6. This is not an Exclusive Reservation; there will be other groups aboard ship with my group,
7. As coordinator, I am responsible for distributing the Safety Rules to those within my group **prior to our arrival** at the USS KIDD.

EXCLUSIVE RESERVATION (minimum 75 people guaranteed)

Enclosed is a check in the amount of \$300.00 (Chk. # _____) for an Exclusive Reservation. This deposit reserves my group's Overnight stay aboard the USS KIDD. I understand that:

1. This deposit is due within ten (10) working days after making my reservation over the phone or the date I have reserved will be made available again for booking to other groups,
2. ***I must pay for a minimum of 75 people to obtain an Exclusive reservation,***
3. My group will be the only group present aboard ship on this night (*not inclusive of Field Days*),
4. The balance is due thirty (30) days prior to the date of our arrival or the date is lost,
5. **There are no refunds. We pay for the number of people that we book on the 30-day deadline.**
6. Children must be a minimum of six (6) years of age to attend (*no exceptions*),
7. There must be a minimum 1-8 adult-to-child ratio within my group,
8. As coordinator, I am responsible for distributing the Safety Rules to those within my group **prior to our arrival** at the USS KIDD.

Optional Activities Requested:

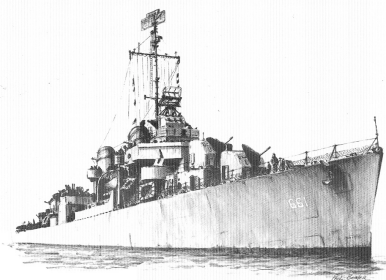
Engine Room Tour
Scavenger Hunt

Ham Radio Demonstration (*volunteers permitting*)
Flag Raising at Memorial Plaza (9:00 a.m.)

I have read all of the conditions listed above and I understand that I am responsible for distributing the referenced information to the members of my group and that the balance of our payment is due 30 days prior to the night of our arrival. The deposit and balance are NON-REFUNDABLE, but may be transferred to a new date if a 30-day notice is given.

(Signature of Group Coordinator)

____ / ____ / ____
(Date Signed)



Breakfast Order Form



On the morning of your stay, McDonalds delivers breakfast to the museum at 7:30 a.m. The basic breakfast included in the \$21.00 price for Overnights includes a Sausage Biscuit and Milk. For an extra \$2.00 per person, you can order a Big Breakfast that includes a sausage paddy, biscuit, jelly, scrambled eggs, hash brown, and milk.

Your breakfast order must be communicated to the USS KIDD Reservations office at the time that you make payment of your final balance thirty (30) days prior to the night of your arrival. You may phone us at (225) 342-1942, Ext. 10, or fax us at (225) 342-2039, or email us at Reservations@usskidd.com.

DATE OF ARRIVAL: ____ / ____ / ____ COORDINATOR: _____

NAME OF GROUP: _____

Please check one of the following options:

BASIC BREAKFAST (included in \$21.00 price)

Number Ordered? _____

- ◆ Includes a sausage biscuit and milk.

BIG BREAKFAST (additional \$2.00 per person)

Number Ordered? _____

- ◆ Includes a sausage paddy, biscuit, jelly, scrambled eggs, hash brown, and milk.

Complimentary coffee will be available in the museum on the morning of your stay.

USS KIDD Overnight Camping Souvenirs



What better way to remember your stay than to purchase a souvenir unique to the USS KIDD? We have several items to choose from in our Gift Shop.

Overnight Camping patches are especially popular with Boy Scouts and Girl Scouts of America. We currently have one (1) design available. Overnight patches are \$3.00 each plus tax.



Dog Tags are also available. Set up a pair of tags for yourself identical to those that sailors and soldiers have worn, ... or custom-design your own. Dog tags are \$6.50 each (includes tax) and are comprised of two (2) tags and a chain. Dog tag silencers (rubber edgings) may also be available to make your souvenir that much more authentic. The silencers are \$1.00 each (includes one for each tag).